

vtech[®]

Instruction Manual

Skate-Along Kitty



VTech understands that a child's needs and abilities change as they grow and with that in mind we develop our toys to teach and entertain at just the right level...

vtech Baby

Toys that will stimulate their interest in different textures, sounds and colours

I am...

...responding to colours, sounds and textures

...understanding cause and effect

...learning to touch, reach, grasp, sit-up, crawl and toddle

Birth-36 months



Pre-School

Interactive toys to develop their imagination and encourage language development

I want...

...to get ready for school by starting to learn the alphabet and counting

...my learning to be as fun, easy and exciting as can be

...to show my creativity with drawing and music so my whole brain develops

3-6 years



Electronic Learning Computers

Cool, aspirational and inspiring computers for curriculum related learning

I need...

...challenging activities that can keep pace with my growing mind

...intelligent technology that adapts to my level of learning

...National Curriculum based content to support what I'm learning at school

4-10 years



To learn more about this and other VTech® products, visit www.vtech.co.uk

INTRODUCTION

Introducing the **Skate-Along Kitty** by **VTech®**! This skateboarding kitty is great for getting little ones moving. Pull the skateboard back and release & she will move back and forth rhythmically.



INCLUDED IN THE PACKAGE

- Skate-Along Kitty
- Quick Start Guide

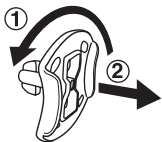
WARNING

All packing materials such as tape, plastic sheets, packaging locks, removable tags, cable ties, cords and packaging screws are not part of this toy and should be discarded for your child's safety.

NOTE

Please keep this Instruction Manual as it contains important information.

Unlock the Packaging Locks:

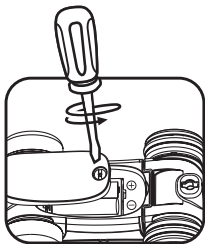


- ① Rotate the packaging locks 90 degrees anticlockwise.
- ② Pull out the packaging locks and discard.

INSTRUCTIONS

BATTERY REMOVAL AND INSTALLATION

1. Make sure the unit is turned **Off**.
2. Locate the battery cover on the back of the unit. Use a screwdriver to loosen the screw and then open the battery cover.
3. If used batteries are present, remove these batteries from the unit by pulling up on one end of each battery.
4. Install 2 new AAA (AM-4/LR03) batteries following the diagram inside the battery box. (For best performance, alkaline batteries or fully charged Ni-MH rechargeable batteries are recommended).
5. Replace the battery cover and tighten the screw to secure.



WARNING:

Adult assembly required for battery installation.
Keep batteries out of reach of children.

IMPORTANT: BATTERY INFORMATION

- Insert batteries with the correct polarity (+ and -).
- Do not mix old and new batteries.
- Do not mix alkaline, standard (carbon-zinc) or rechargeable batteries.
- Only batteries of the same or equivalent type as recommended are to be used.
- Do not short-circuit the supply terminals.
- Remove batteries during long periods of non-use.
- Remove exhausted batteries from the toy.
- Dispose of batteries safely. Do not dispose of batteries in fire.

RECHARGEABLE BATTERIES:

- Remove rechargeable batteries (if removable) from toy before charging.
- Rechargeable batteries are only to be charged under adult supervision.
- Do not charge non-rechargeable batteries.

Disposal of batteries and product



The crossed-out wheellie bin symbols on products and batteries, or on their respective packaging, indicates they must not be disposed of in domestic waste as they contain substances that can be damaging to the environment and human health.

The chemical symbols Hg, Cd or Pb, where marked, indicate that the battery contains more than the specified value of mercury (Hg), cadmium (Cd) or lead (Pb) set out in the Batteries and Accumulators Regulation.



The solid bar indicates that the product was placed on the market after 13th August, 2005.

Help protect the environment by disposing of your product or batteries responsibly.

VTech® cares for the planet.

Care for the environment and give your toy a second life by disposing of it at a small electricals collection point so all its materials can be recycled.

In the UK:

Visit www.recyclenow.com to see a list of collection points near you.

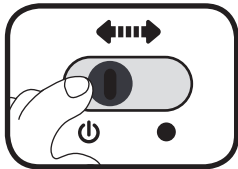
In Australia & New Zealand:

Check with your local council for kerbside collections.

PRODUCT FEATURES

1. On/Off Switch

To turn the unit **On**, slide the **On/Off Switch** to the **On** ⏻ position. You will hear a song, phrases, sounds and a short tune. To turn the unit **Off**, slide the **On/Off Switch** to the **Off** ● position.



2. Automatic Shut-Off

To preserve battery life, the **Skate-Along Kitty** will automatically shut off after approximately 25 seconds without input. The unit can be turned on again by pressing any button.

NOTE

If the unit powers down while playing, or if the light fades out during play, please install a new set of batteries.

ACTIVITIES

1. Number Button

Press the **Number Button** to learn about numbers and counting, and hear cute sounds and short tunes. The kitty will turn its body when the button is pressed. The lights will flash with the sounds.



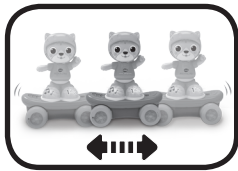
2. Music Button

Press the **Music Button** to hear songs, music, fun sounds and short tunes. The kitty will turn its body when the button is pressed. The light will flash with the sounds.



3. **Motion Sensor**

Push or pull the skateboard to activate the **Motion Sensor** and hear music, fun sounds, playful phrases and tunes. When a song or a melody is playing, push or pull the skateboard again to add fun sounds on top of the song or melody. The light will flash with the sounds.



MELODIES

1. Pussy Cat, Pussy Cat
2. Three Little Kittens
3. Rockin' Robin
4. The Wheels on the Bus
5. Here We Go 'Round the Mulberry Bush
6. Bicycle Built for Two
7. Daring Young Man on the Flying Trapeze
8. Aiken Drum
9. London Bridge Is Falling Down
10. One, Two, Buckle My Shoe
11. Peas Porridge Hot
12. Sailing, Sailing
13. Polly, Put the Kettle On
14. Boys and Girls Go out to Play
15. Did You Ever See a Lassie?
16. Toyland
17. Happy Farmer
18. Little Robin Redbreast
19. Old King Cole
20. One Man Went to Mow a Meadow

SONG LYRICS

Song 1

Roll, roll, down the road,

On my blue skateboard!

Look at me, I feel so free, riding on my board!

Song 2

A, I am awesome.

B, I love my board,

C, I'm a cool, cool cat!

CARE & MAINTENANCE

1. Keep the unit clean by wiping it with a slightly damp cloth.
2. Keep the unit out of direct sunlight and away from any direct heat sources.
3. Remove the batteries if the unit will not be in use for an extended period of time.
4. Do not drop the unit on hard surfaces and do not expose the unit to moisture or water.

TROUBLESHOOTING

If for some reason the unit stops working or malfunctions, please follow these steps:

1. Turn the unit **Off**.
2. Interrupt the power supply by removing the batteries.
3. Let the unit sit for a few minutes, then replace the batteries.
4. Turn the unit **On**. The unit should now be ready to play with again.
5. If the unit is not working properly, install a brand new set of batteries.

If the problem persists, please contact our Consumer Services Department, and a service representative will be happy to help you.

CONSUMER SERVICES

Creating and developing **VTech®** products is accompanied by a responsibility that we at **VTech®** take very seriously. We make every effort to ensure the accuracy of the information, which forms the value of our products. However, errors sometimes can occur. It is important for you to know that we stand behind our products and encourage you to call our Consumer Services Department with any problems and/or suggestions that you might have. A service representative will be happy to help you.

UK Customers:

Phone: 0330 678 0149 (from UK) or +44 330 678 0149 (outside UK)

Website: www.vtech.co.uk/support

Australian Customers:

Phone: 1800 862 155

Website: support.vtech.com.au

NZ Customers:

Phone: 0800 400 785

Website: support.vtech.com.au

PRODUCT WARRANTY/ CONSUMER GUARANTEES

UK Customers:

Read our complete warranty policy online at vtech.co.uk/warranty.

Australian Customers:

VTECH ELECTRONICS (AUSTRALIA) PTY LIMITED –
CONSUMER GUARANTEES

Under the Australian Consumer Law, a number of consumer guarantees apply to goods and services supplied by VTech Electronics (Australia) Pty Limited. Please refer to vtech.com.au/consumerguarantees for further information.

**Visit our website for more
information about our products,
downloads, resources and more.**

www.vtech.co.uk
www.vtech.com.au

